

LUX SOHO



Meta_city Aerial View

Artist's Impression



inspire.
infuse.
create.

meta_city

Life Transcends The Norm

LUX SOHO is part of the meta_city, a mixed development complemented with service residence, SOHO, an iconic corporate tower, a vibrant lifestyle mall and a hip international hotel. It is designed to attract vibrant lifestyles, ideas and radiant energies with lifestyle choices that transcend the norm.

LUX SOHO

Luxury For Enterprising Lifestyles

LUX SOHO merges chic luxury with urban functionality. Compact yet designed with lavish comfort, it redefines maximising living space with the allure of a sophisticated hotel lifestyle. Creative design ideas bring lifestyle areas and work spaces together to ensure a new level of progressive living for urbanites.





Grand Drop Off

Artist's Impression

Stylish Urban Expressions

The idea of high aesthetics combined with enhanced livability makes LUX SOHO a unique urban home. From its iconic facade, grand lobby entrance to interiors that mirror a chic hotel setting, life is convenient with stylish nuances. Exclusivity is further preserved with an exceptional low density configuration of units.



Grand Lobby and Concierge

Artist's Impression

Creative Use Of Space

Customise your idea of urban living to a personal level like never before. Flexible living areas offer luxurious comfort with efficient practicality in mind. Within 450 sq. ft. of flexible space, every inch is redesigned for luxurious comfort with efficient practicality in mind.



Foyer

Artist's Impression



Living Room

Artist's Impression



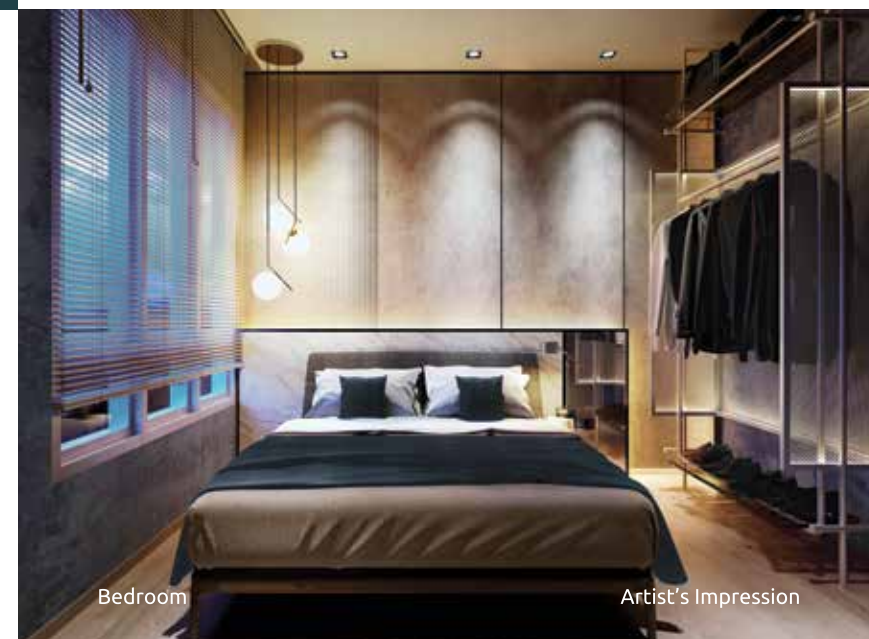
Study Area

Artist's Impression



Dining Room

Artist's Impression



Bedroom

Artist's Impression

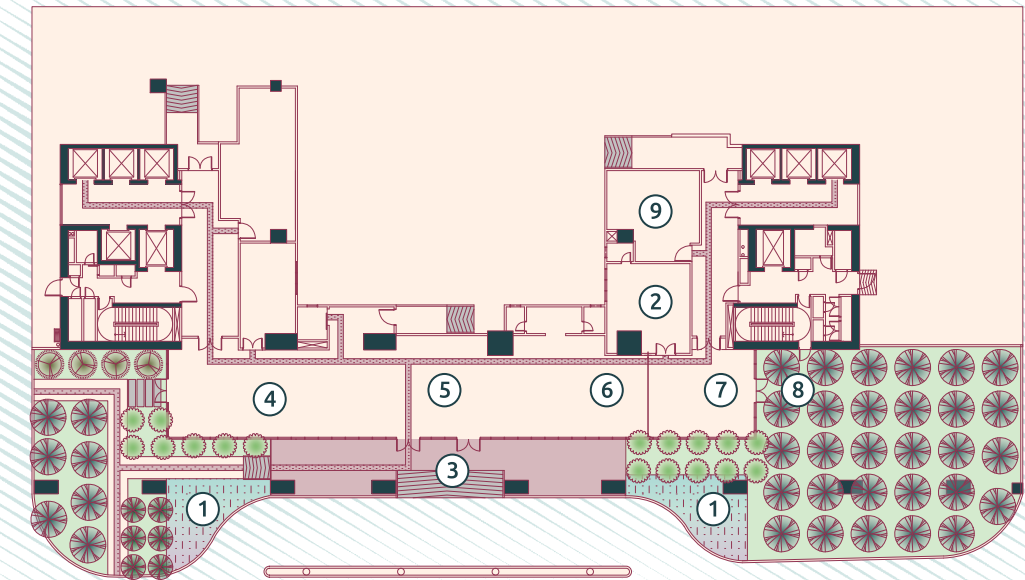
Interiors transform into a bedroom, study, kitchen and living area. Well-planned layouts maximise storage, while 9.5 ft. high ceilings capture a refreshing sense of space. Explore flexibility that allows you to create unique configurations for both productivity and leisure.

Make An Elegant Entrance

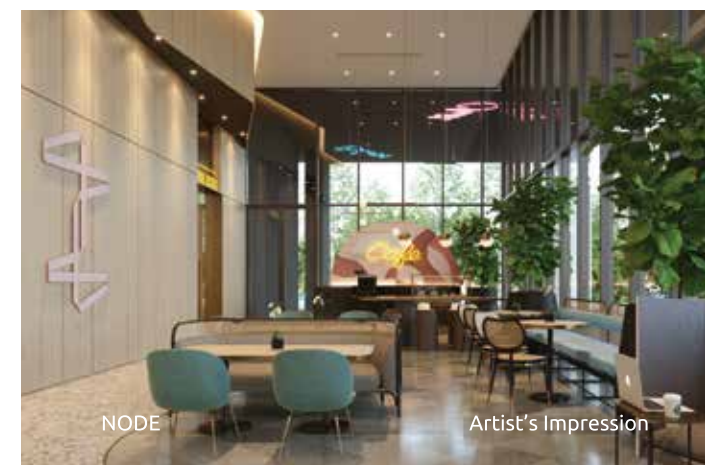
LUX SOHO greets you with style. The entrance is lavishly designed with a reflecting pond and water features. The lobby offers a luxurious setting with concierge services. A private area for reading and lounging beckons with fashionable décor and plush seating. Here guests and residents alike can relax and socialise.



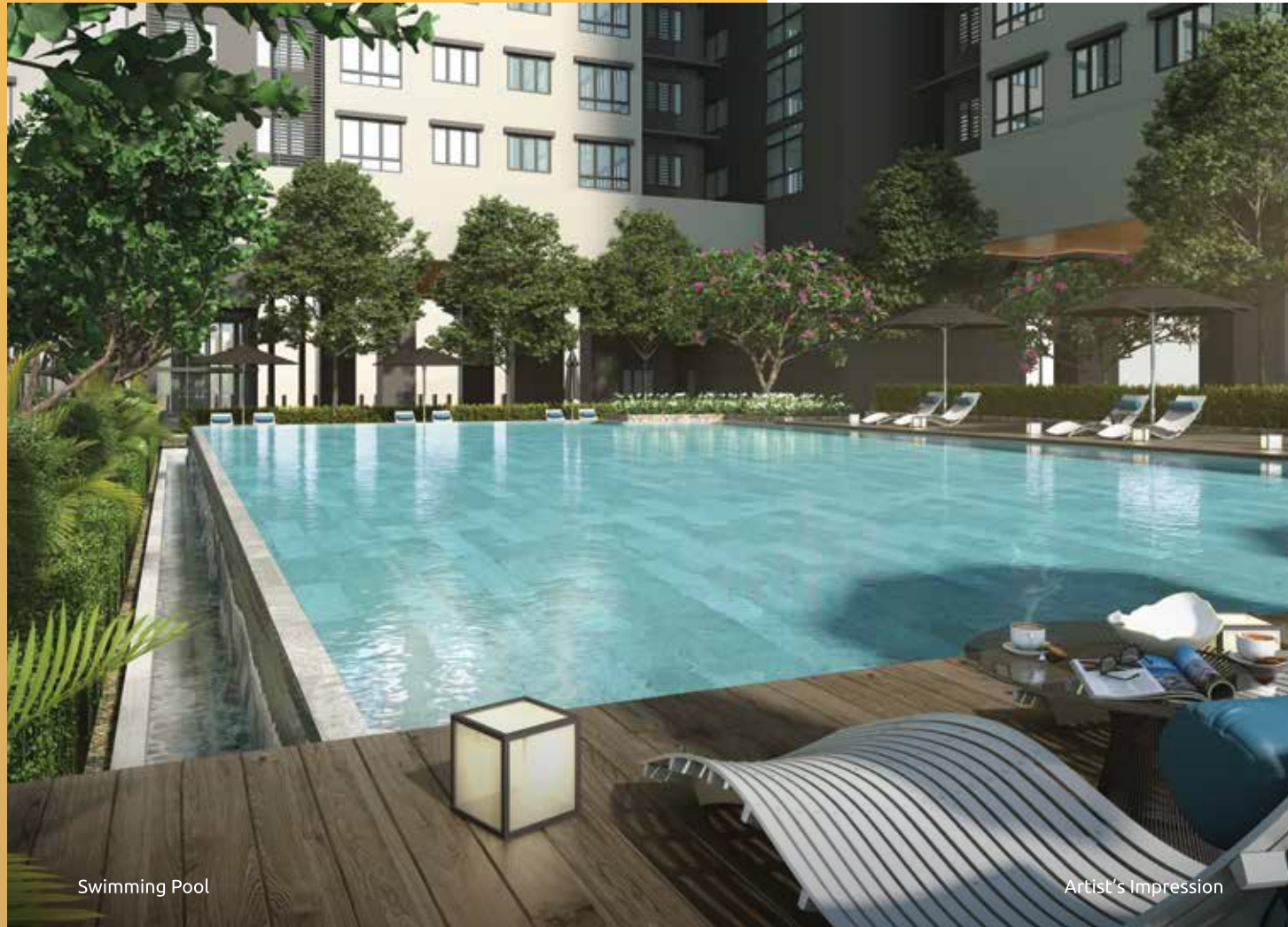
Ground Floor



- | | | | |
|---|-------------------|---|-----------------------|
| 1 | Reflective Pond | 6 | NODE Co-working Space |
| 2 | Management Office | 7 | NODE Cafe |
| 3 | Entrance | 8 | NODE Patio |
| 4 | Reading Lounge | 9 | Mail Room |
| 5 | Concierge | | |



The NODE is a unique work and chill space that features trendy indoor and outdoor settings with a café. Relax at private corners, comfy lounges or create projects together at an open co-work area. This cosy, interactive spot provides an ideal escape.



Swimming Pool

Artist's Impression



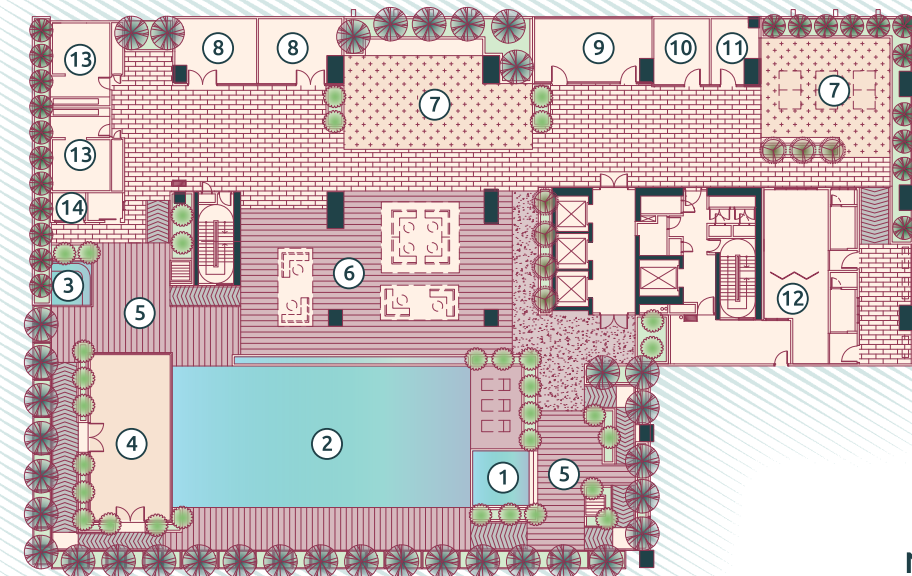
Gym and Outdoor Lounge

Artist's Impression

Enjoy A Splash of Luxury

Enjoy a comprehensive list of facilities fit for savvy urbanites. An amazing floating gym will lift spirits with a great view while working out. An inviting pool becomes the perfect rejuvenation at the end of a perfect day. These and many more leisurely choices await.

Level 5



- | | | | |
|---|---------------|----|---------------|
| 1 | Kid's Pool | 8 | Retail |
| 2 | Swimming Pool | 9 | Office |
| 3 | Jacuzzi | 10 | Reading Room |
| 4 | Floating Gym | 11 | Games Room |
| 5 | Pool Deck | 12 | Surau |
| 6 | Pool Lounge | 13 | Changing Room |
| 7 | Play Area | 14 | Pantry |

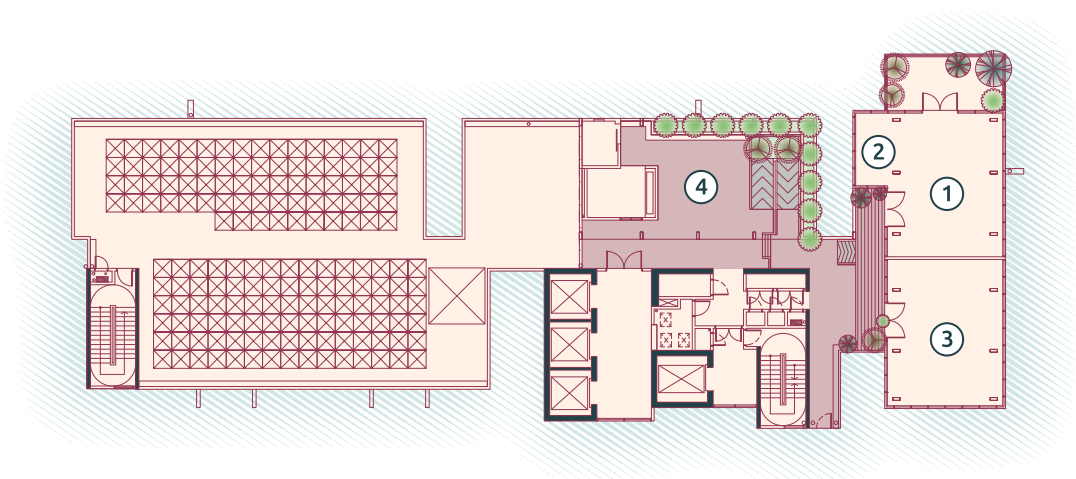
Move Up To The High-Life



The roof level is a getaway for any day, with a scintillating city view. The SKY VIEW is an elegant centre-piece designed with glass partitions that provides a stylish meeting area or can be used as a banquet hall with grand vistas all around. It includes a Cigar Lounge and Whisky Bar for a leisurely setting with drinks.

In the middle is the SKY GARDEN, an adjoining area between LUX SOHO and LUX service residence. It is a perfectly landscaped, open space with unhindered views over the city's horizons.

SKY VIEW



- | | |
|----------------|----------------|
| 1 Cigar Lounge | 3 Meeting Room |
| 2 Wine Bar | 4 Viewing Deck |



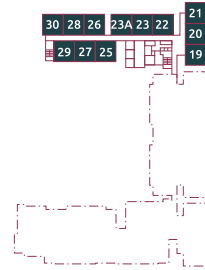
Tower A Lounge

Artist's Impression



Type A

450 sq. ft.



Layout Plans - 1+1 Bedroom



SPECIFICATIONS

STRUCTURE	REINFORCED CONCRETE	
WALL	REINFORCED CONCRETE OR MASONRY WALL	
ROOFING COVERING	REINFORCED CONCRETE FLAT SLAB	
ROOF FRAMING	REINFORCED CONCRETE	
CEILING FINISHES	PLASTER BOARD / SKIM COAT & PAINT	
WINDOWS	ALUMINIUM FRAMED GLASS WINDOW	
DOORS	FLUSH DOOR	
IRONMONGERY	QUALITY LOCK SETS	
WALL FINISHES	INTERNAL WALLS	: PLASTER & PAINT
	EXTERNAL WALLS	: PLASTER & PAINT
	PANTRY	: TILES TO 1500MM (APPROX.) HEIGHT INTERNALLY
FLOOR FINISHES	BATHROOM	: TILES TO CEILING HEIGHT INTERNALLY
	LIVING / DINING	: TILES
	ROOM	: LAMINATED FLOORING
	PANTRY	: TILES
	BATHROOM	: TILES

SANITARY & PLUMBING FITTINGS (BATHROOM/KITCHEN)	TYPE A	ELECTRICAL INSTALLATIONS	TYPE A
WASH BASIN	1	LIGHTING POINT	8
WATER CLOSET	1	13A SWITCHED SOCKET OUTLET	9
SHOWER ROSE	1	15A SWITCHED SOCKET OUTLET	1
KITCHEN SINK	1	CEILING FAN POINT C/W IRON HOOK	3
		20A AIR-COND POWER POINT	2
		20A WATER HEATER POINT	1

INTERNAL COMMUNICATION	TYPE A
FIBRE WALL SOCKET	1
SMATV Outlet	1

About the Developer

A Commitment To Stand Behind An Architectural Masterpiece.

Behind the walls of residential and commercial architectures are more than just landscape and interior settings, but carefully planned spaces to achieve perfection and practicality.


Acclaimed in the delivery and consistency of quality developments – Villamas has experienced tremendous growth which exceeds RM1.3billion in gross development value since its first property endeavour in year 2000. Villamas' vision to bring together a lifestyle of enhanced living, business and leisure still remains; while its purchasers, clientele and investors are set to indulge in the best of architectural advancements and lucrative investment returns.

Now standing strong with a team of experts and professionals in engineering, construction, town planning, marketing and finance, Villamas has mastered the craft of taking basic architectural blending in with the latest design and functionality concept.

The results are projects with inspired urban living, The Andes, Cristal Residence, Verde@Ara Damansara, Zefer Hill Residence and Serin Residency that show poise crafted to perfection. All of Villamas' homes are designed to appeal to cosmopolitan dwellers and to those who truly appreciate the new experience of living. Characterized by innovation, exclusivity and elegant architectures, such are the qualities that Villamas possesses to cater to homeowners and investors alike.

metacity.my
(603) 8957 8883

META CITY PROPERTY GALLERY
D-19-G, Jalan Atmosphere 7,
43400 Seri Kembangan, Selangor.

T (603) 8957 8883
F (603) 8958 6222
GPS: 2.982744, 101.660795 

**Visit Our
Property
Gallery Today!**

Open Daily
10am - 6pm

HQ SALES GALLERY

B-1-6, Plaza TTDI, Jalan Wan Kadir 3,
Taman Tun Dr Ismail, 60000 Kuala Lumpur.

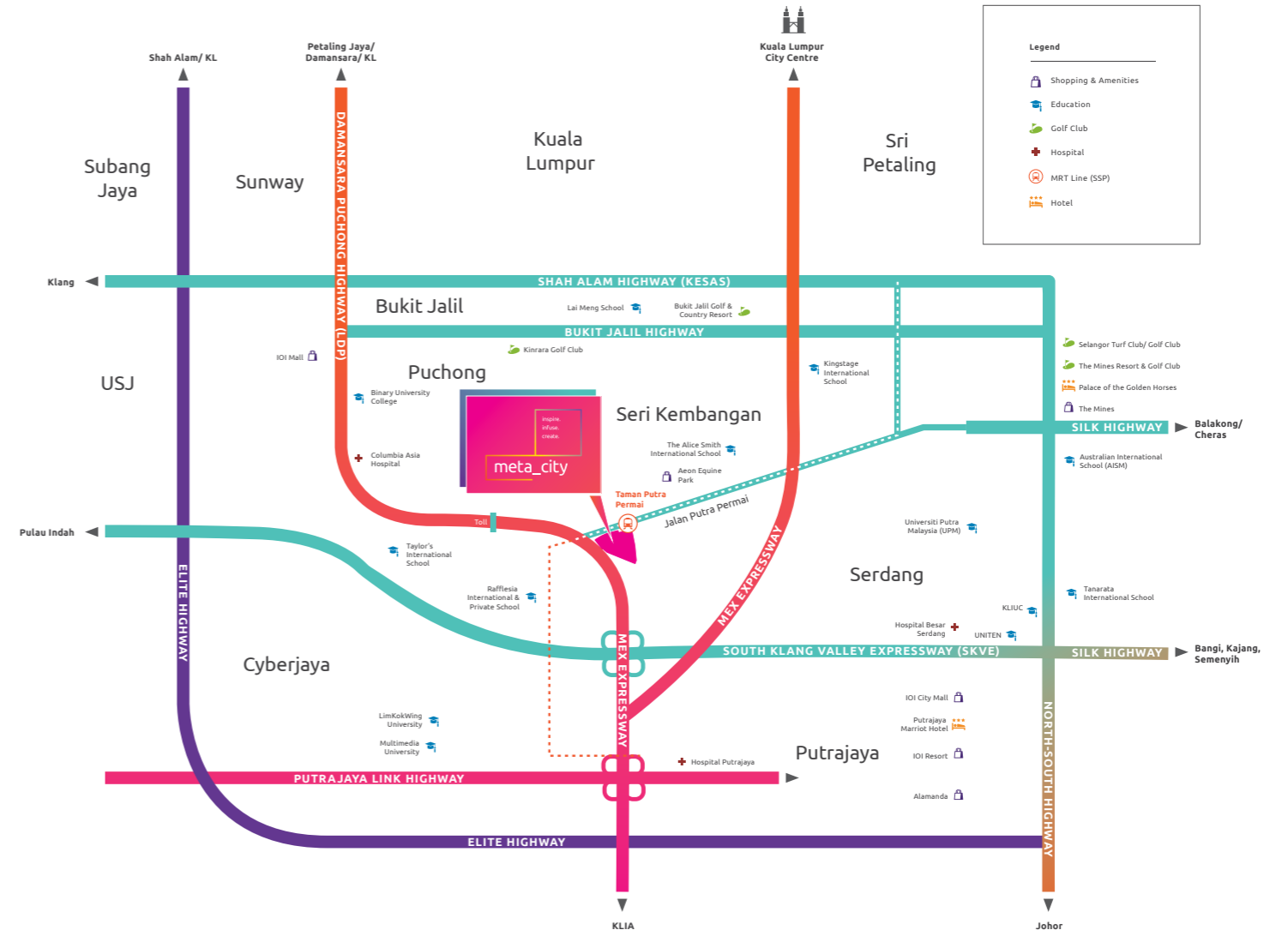
T (603) 7728 6666
F (603) 7728 6606
E salesenquiries@villamas.com

Developed by:
VILLAMAS METACITY SDN BHD
(634249-X)

VILLAMAS[®]
www.villamas.com

Developer's License No: 12087-2/03-2021/0285(L) | Validity Period: 29/03/2019 – 28/03/2021 | Advertising Permit No: 12087-2/03-2021/0285(P) | Validity Period: 29/03/2019 – 28/03/2021 | Tenure: Leasehold 99 years (expiry date: 27/05/2097) | Restriction in Interest: This land cannot be transferred, charged without the prior consent from the State Authority | Land Encumbrances: To be charged to CIMB Bank Berhad | Authority Approving Building Plan: Majlis Perbandaran Subang Jaya | Approval Plan No: MPSJ.BGN.BP6.600-1/11/5/80(29) | Date of Approval: 22/10/2018 | Expected Date of Completion: July 2023 | Total Unit: 990 unit; SOHO – 396 unit (450 sq. ft.) & Serviced Residence - 594 unit (659 sq. ft. & 864 sq. ft.) | Selling Price: SOHO - Min RM364,800 – Max RM438,800 | Serviced Residence - Min RM491,800 – Max RM690,800 | Bumiputera Discount: 7%

All the information contained herein is subject to change without notification as may be required by the relevant authorities or developer's architect and cannot form part of an offer or contract. All illustrations and pictures are artist impressions only. The items are subject to variations, modifications as may be recommended by the company's architect and / or relevant approving authorities. Whilst every care is taken in providing this information, the owner, developer and manager cannot be held liable for variations.



Direct MRT Access At meta_mall

meta_city offers excellent connectivity with an MRT station right at your doorstep. The site is highly visible from Jalan Putra Permai with easy links to major highways like LDP, Putrajaya-KLIA, MEX and SILK highways and more. With its strategic location minutes from KL City, it is destined to be the new lifestyle destination for unique lifestyles and the 'go to' venue for discovering new trends.

